



JP HARDWARE SUPPLIES

[www.jphardware.com.au](http://www.jphardware.com.au)



JP Hardware, proud suppliers of

Brio®



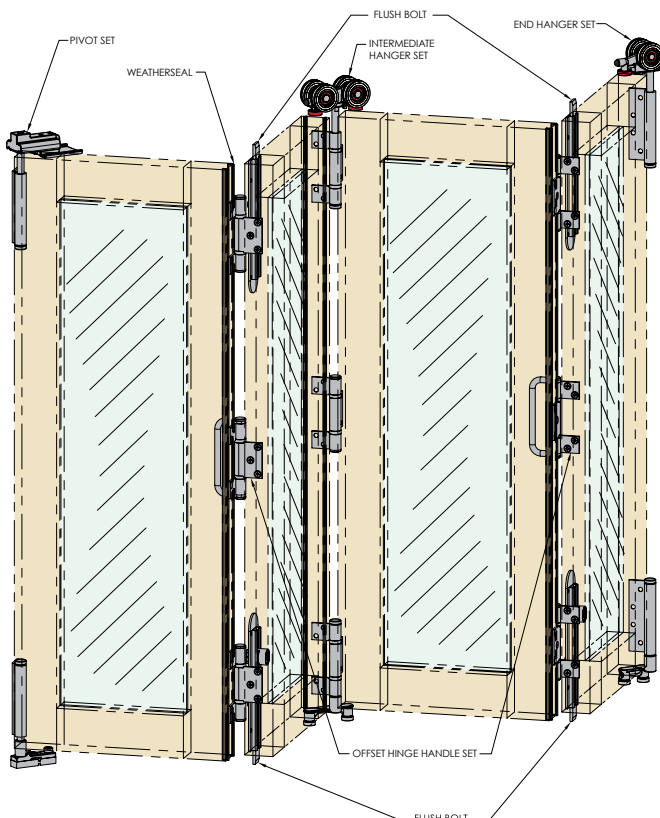


# Brio® Weatherfold 4s



**Above:** Doors designed and made by Steel Window Design,  
architecture by Ben Callery Architects,  
photography by Tatjana Plitt Photography

**Cover:** Tunnels Beaches, photography by Matt Fryer Photography



## Brio® Weatherfold 4s

Brio brings a stylish edge to any home or commercial venue when it comes to using space more efficiently.

Exterior folding doors are without doubt the key to indoor/outdoor living. Whether you need to connect or partition an outdoor area; exterior folding doors open and close effortlessly, and stack unobtrusively to create wide open vistas.

Brio Weatherfold 4s is available in three capacities, 35kg for window and serving applications; 50kg for full size doors and 100kg for larger panels. Stainless steel precision bearings ensure effortless action and the satin stainless finish is ideal for external applications

Up to eight equal size panels can fold seamlessly in each direction with either inward and outward opening functionality.



## Brio 286 Dual Point Lock and 288 Lever Furniture

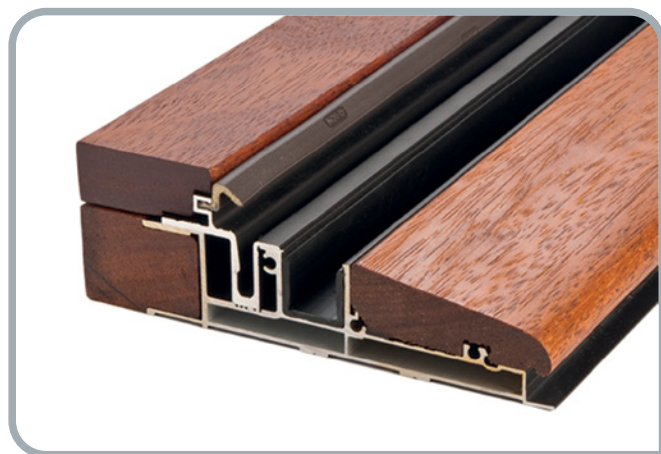
Large, folding doors which connect the outdoors to your living space are a luxury but security is a necessity. Brio's 286 dual point lock has been designed for timber and aluminium panels to offer a single action handle as a stylish alternative to two flush bolts.

The 180° operation throws a shoot 22mm into the head and sill simultaneously for panels up to 3.5m high. Matching lever furniture 288, is also available with or without a built in magnetic catch.

## Self Draining Sills

Brio provides two optional self draining sills which suit 38-40mm panels. The 95HS sill operates with Brio's 456 flush bolts and the 94HS operates with Brio's 286 dual point lock. Both have the option to integrate Brio's 612 screen.

For more on Brio's screening solutions see page 4.



## Performance

Weatherfold 4s has undergone a rigorous test program including cycle testing of all components and corrosion resistance testing. Cast items are made from 316 grade stainless steel and surfaces are passivated.



## Weatherfold 4s Servedy 35

The Brio® Weatherfold 4s Servedy 35 has been developed specifically to meet the requirements of servedy type installations. As no sill or channel is required, the work surface is left completely unobstructed from one side to the other making this an ideal solution for kitchen serveries that open out to outdoor dining areas.

**Max Sash weight:** 35kg  
**Max Sash height:** 1800mm  
**Max Sash width:** 650mm  
**Min Sash thickness:** 35mm  
**Max number:** 2 each way  
**Max opening:** 2600mm

## Weatherfold 4s Window 35

Brio® Weatherfold 4s Window 35 is designed for exterior folding windows in residential or light commercial applications with up to six panels folding in each direction.

The guide system not only provides stability for folding up to 12 window sashes, its concealed low profile design and excellent weatherproofing capabilities make it an ideal option for window sills.

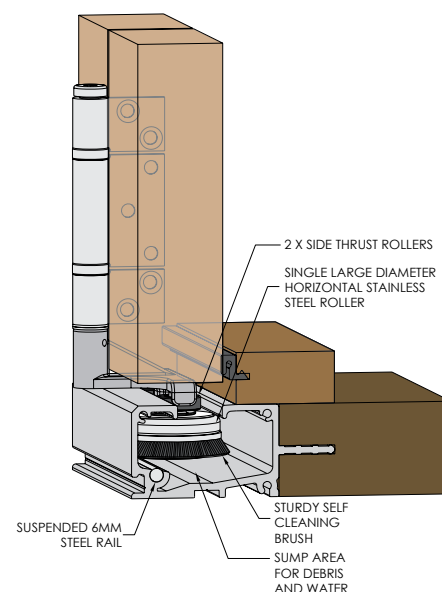
**Max Sash weight:** 35kg  
**Max Sash height:** 2600mm  
**Max Sash width:** 1000mm  
**Min Sash thickness:** 35mm  
**Max number:** 6 each way  
**Max opening:** 12000mm

Product shown with Brio's 312 Automated Insect Screen, for more information see page 4.





# Brio® Weatherfold 5c



## Brio Weatherfold 5c

Weatherfold 5c has been developed to handle panels up to 80kg with precision and ease. The impressive, bottom rolling hardware is suitable for metal and timber doors.

The innovative system eliminates the need for a reinforced structural beam above the opening, as all the doors' weight is carried by bottom rollers.

Bottom-rolling type systems are particularly favoured by architects, as the absence of the restricting top beam also means there is more room for design creativity.

### Self-Cleaning System

Another stand out feature of Weatherfold 5c is its patented self-cleaning technology. A brush attached to the rim of the horizontal roller sweeps and cleans the rail, as the door traverses across the opening.

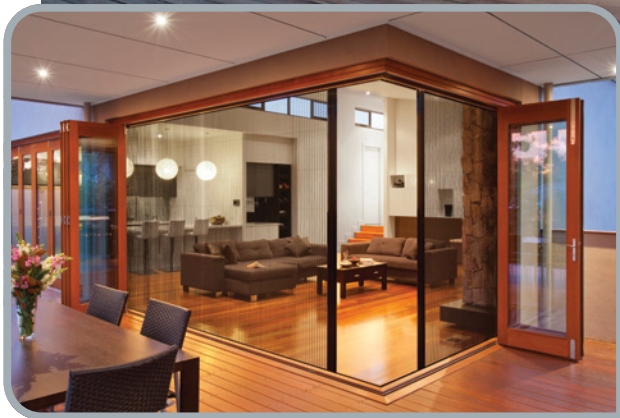
Brio's self-draining 98HS sills are specifically designed for Brio Weatherfold 5c bottom rolling, folding hardware and provide an efficient and convenient solution for floor-channel drainage.

The sills are also designed to aesthetically conceal the bottom roller out of sight, but provide access for effective cleaning and maintenance when required.

A choice of sill can be made from a square, aluminium nose or a timber tread for a more traditional appearance.

Brio's Weatherfold 5c uses Brio 286 and 288 hardware for secure and stylish locking (see page 2) and can be seamlessly integrated with the 612 screen (see page 4).

## Brio® 612 Insect Screen



### Brio 612 Retractable Pleated Insect Screen

The Brio 612 Retractable Pleated Insect Screen is designed for durability but also flexibility, meaning it can integrate with all Weatherfold folding systems and single or multi sliding panel applications.

Brio screens are assembled in Australia with the finest quality materials to ensure excellence is maintained. This local manufacture allows for custom colours on 612 screens, a unique service to bring aesthetic continuity to projects. Standard colours in the 612 range are black, silver and white.

Another advantage of the Brio 612 Screen is the ability to screen corner openings without the need for a corner post, providing stunning uninterrupted views.

Additional accessories include a pocket system which allows the screen to be installed beyond the reveal and a high performance kit for taller screens or breezy environments.

Single Screen	Height	Width
Minimum	600mm	900mm
Maximum	3200mm	4500mm
Double Screen	Height	Width
Minimum	600mm	1800mm
Maximum	3200mm	9000mm

## Brio® 312 Insect Screen



### Brio 312 Automated Pleated Insect Screen

Brio's 312 screen lets you bring the outdoors in at the touch of a button, without inviting the insects.

No hard wiring is required when installing Brio's 312 automated pleated insect screen as the unit is completely battery operated which is recharged via mini USB port.

The wall mounted, magnetic dock allows easy storage of the remote control which can conveniently open up to 5 individual screens.

Single Screen	Height	Width
Minimum	1000mm	1000mm
Maximum	1800mm	2600mm





## Brio® Quick Run 120



# Brio Quick Run 120

The Brio Quick Run 120 system is designed for interior sliding panels up to 120kg in residential or commercial applications. It uses four engineered polymer conical shaped wheels with high performance steel bearings for an improved operation that is easier, smoother and faster.

The Quick Run 120 series' hangers provide a flexible solution for high traffic areas, dedicated to suit a wide range of applications and door constructions, such as timber, MDF and aluminium.

Brio Quick Run 120 systems are provided with clip stops to prevent panels from slipping out of open and closed positions. Our 120SCT soft close however, adds a premium feel to the system, removing door slamming and at the same time, protecting little fingers. The new design allows for easy alignment in the track at installation and also has a fail safe stop built in. 120SCT does not need to be correctly primed before placing inside the track which makes install quicker, and operation even easier.









The new tracks (120C, 120E & 120F) are purposely designed to support the shape of the hangers which assists in the improved operation with its internal slopes. It removes the worry for track misalignment and reduces the panel operating force, improving the overall experience.

Another available accessory is the TEL/2 telescopic kit which allows for one door to operate the next in a seamless action.



For heavier panels or high traffic applications, Brio's Single Run 180 and 350 systems are also available.

Hanger	57JNP	58JNP	61JNP
	<p>Easy and simple surface mounting</p> <p>Incorporates a latching mechanism for rapid installation</p>	 <p>Recessed or morticed into panel (suitable for aluminium and timber doors)</p> <p>Auto lock attachment between plate and hanger bolt</p>	 <p>Morticed into panel (suitable for timber doors)</p> <p>Virtually invisible clearance of 5mm between track and panel for a flawless finish</p>
Track	120C	120E	120F
	<p>120C track is designed for integration into a plasterboard or suspended ceiling</p>	 <p>120E track can be soffit fixed or fixed with brackets</p> <p>Track includes a brush seal slot which allows the use of Brio's Telescopic action accessory</p> <p>Clip-on fascia available</p>	 <p>120F track can be soffit fixed or fixed with brackets</p> <p>Flat underside provides a clean and simple aesthetic</p>



# Notes

JP Hardware Supplies was reformed in January 2015 opening its Head Office in Thomastown Victoria, a branch has since followed in Dandenong Victoria, Royal Park, South Australia and Smeaton Grange, NSW with a pledge to once again supply quality products and also quality service Nationally. This includes having a very experienced team with over a combined 100 years' experience to help with any questions, advice and general service ensuring that the end result is the desired result.



**JP HARDWARE SUPPLIES**  
[www.jphardware.com.au](http://www.jphardware.com.au)

JP Hardware Supplies (VIC),  
12 Latitude Boulevard,  
Thomastown VIC 3074,  
Phone 03 9939 6888,  
[sales@jphardware.com.au](mailto:sales@jphardware.com.au)

JP Hardware Supplies (VIC),  
8 Enterprise Circuit,  
Dandenong VIC 3175,  
Phone 03 8753 2191,  
[sales@jphardware.com.au](mailto:sales@jphardware.com.au)

JP Hardware Supplies (NSW),  
Unit 1/141 Hartley Road,  
Smeaton NSW 2567,  
Phone 02 4624 2843,  
[salesnsw@jphardware.com.au](mailto:salesnsw@jphardware.com.au)

JP Hardware Supplies (SA),  
Unit 1/10 Schenker Drive,  
Royal Park South SA 5014,  
Phone 08 7226 9571,  
[salessa@jphardware.com.au](mailto:salessa@jphardware.com.au)